

Review and Remember 7

will

+ / -

The contraction of will is 'll.

I will help you. → I'll help you.

Use not to make negatives: will + not = won't.

I won't help you. It won't work.

1 Write the contractions.

- 1 I will come right away.
- 2 You will trip.
- 3 She will hurt her back.
- 4 It will not last.
- 5 We will be there at six.
- 6 They will not break.

?

Change the word order to make questions.

You'll be OK. → Will you be OK?

2 Write the questions.

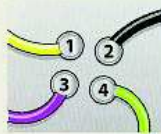
- 1 I'll see you tomorrow.
- 2 She'll be late.
- 3 It'll burst.
- 4 We'll set off the alarm.
- 5 They'll be cold.

Safety instructions

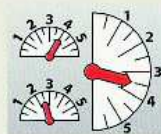
This is a competition. When your teacher says a number, read and follow the instruction.



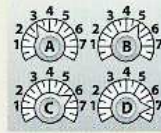
1 The red switch has to be on. Keep the green lever down. The blue lever can be up or down. If the controls are correct, sit down. If they are wrong, stand up.



2 The green wire should be connected to terminal 4. The purple wire can be connected to terminal 1 or 3. The black wire must be connected to terminal 2. If the wires are correct, stand up. If the wires are wrong, sit down.



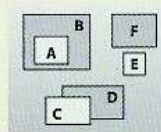
3 The gauge at the top on the left should say 4.0. Don't allow the gauge on the right to fall under 3.0. The gauge on the left at the bottom must not be over 2.0. If the gauges are OK, raise your left arm. If the gauges are wrong, raise your right arm.



4 You can turn knob D to 5 or 7 but never put it on 6. Knob A has to be on 3. Make sure knob B is on 6. Don't touch knob C. If the knobs are correct, put your left hand on your head. If the knobs are wrong, put your right hand on your head.



5 Never turn the machine on when the red warning light is on. Make sure the fan is on. Do not use the machine if the temperature is under 25° or over 35°. Wait for the pressure to increase to 350 before turning the machine on. If it is OK to switch on this machine, put your right hand on your head. If it is not OK, turn round and put your left hand on your head.



6 A must not be inside C. Don't allow D to be in front of C. Make sure you keep E under F. If the diagrams are correct, put your hands on the table. If the diagrams are wrong, shake hands with the person sitting next to you.

Irregular verbs

Find the past forms of these verbs in the puzzle. Read across, down, and diagonally.







go	come	mean	say	rise
can	find	speak	write	think
sell	have	put	forget	do
leave	ring	cut	take	tell

H	W	D	W	R	O	T	E	E
A	F	E	I	X	T	H	S	D
D	O	O	N	D	T	O	L	D
C	U	T	R	T	R	U	O	X
M	N	X	X	G	O	G	S	K
E	D	C	N	C	O	H	A	S
A	X	A	L	E	F	T	I	O
N	R	M	X	X	U	X	D	L
T	X	E	S	P	O	K	E	D

Measuring

- Complete the table.
- What measurement tools do you use? What do they measure? What are the units of measurement?
- Use words from the list to complete the product specifications.

Tank volume
Length
Voltage
Dimensions
Colour
Material
Operating
Price
Pack sizes
Operating temperature
Width
Pressure
Power consumption
Height
Memory
Guarantee
Speed
Weight
Recording times
Sizes
Software

What is it?	 a clock	 a thermo- meter	 a gauge	 a tape measure	 scales	 a volt- meter
What does it measure?	time					
What are the units of measurement?	hours, minutes, seconds					

1 Movie camera

Length : 65 mm
..... : 93 mm
..... : 32 mm
..... : 60 minutes at 15 frames
per second



2 Surgical gloves

..... : latex
..... : green
..... : small, medium, and large
..... : 100 pairs per box, 10
boxes per case



3 Flying insect trap

..... : 12.9 in x 11.6 in x 3.7 in
..... : 3.31 lbs
..... : 25 watts
..... : \$63.72



4 Air compressor



..... : 12 months
..... : 0.93 gal
..... : 115-60 v
..... : 120 psi

5 Printer



..... : 11 pages per minute
(black and white), 8.5
pages per minute
(colour)
..... : 4MB built-in RAM
..... : 5°C - 40°C
..... : MS Windows, MS-DOS
compatible

Information file

File 1

Unit 3, page 15

Specifying, 7

B

You and your partner both have storerooms. There are ten different items in each storeroom. The first person to find them all is the winner.

Find out what's in your partner's storeroom and write it in the correct square. Take turns to ask and answer questions like this:

A *I'll go first. What's in J16?*

B *Nothing! You missed. OK, it's my turn. What's in H18?*

My storeroom

	7	16	17	60	70
G		 15 yd rope		 4 in bolt	 2 m ladder
B		 12 ft cable	 30 cm screw		
J	 60 watt bulb				
P	 5 gal pump	 10 lb weight			 3 amp fuse
Y			 6 volt battery		

My partner's storeroom

	8	15	18	50	80
H					
I					
A					
E					
R					