

## Warning signs

1 Match the instructions with the warning signs.

- 1 Don't enter. ....
- 2 Be careful! Don't trip. ....
- 3 Wear a hard hat. ....
- 4 Wash your hands. ....
- 5 Don't touch. ....
- 6 Wear ear protection. ....
- 7 Don't bring cameras in here. ....
- 8 Keep the aisle clear. ....
- 9 Use the machine's safety guard. ....
- 10 Open the door with care. ....
- 11 Keep cylinders secure and upright. ....
- 12 Secure your hair. ....
- 13 Don't bring food or drink in here. ....
- 14 Be careful! Slippery floor. ....
- 15 Lift with care. ....

2 Some signs have no instructions. Write the instructions for them.

Example

Sign v – Don't smoke.

3 Work with a partner. Test each other. One person points at a sign. The other person gives the instruction.

4 Work in groups. What warning signs do you need in your workplace? Make a list.

Example

Don't remove the safety guard.

Wear safety boots.



a



b



c



d



e



f



g



h



i



j



k



l



m



n



o



p



q



r



s



t





u



v

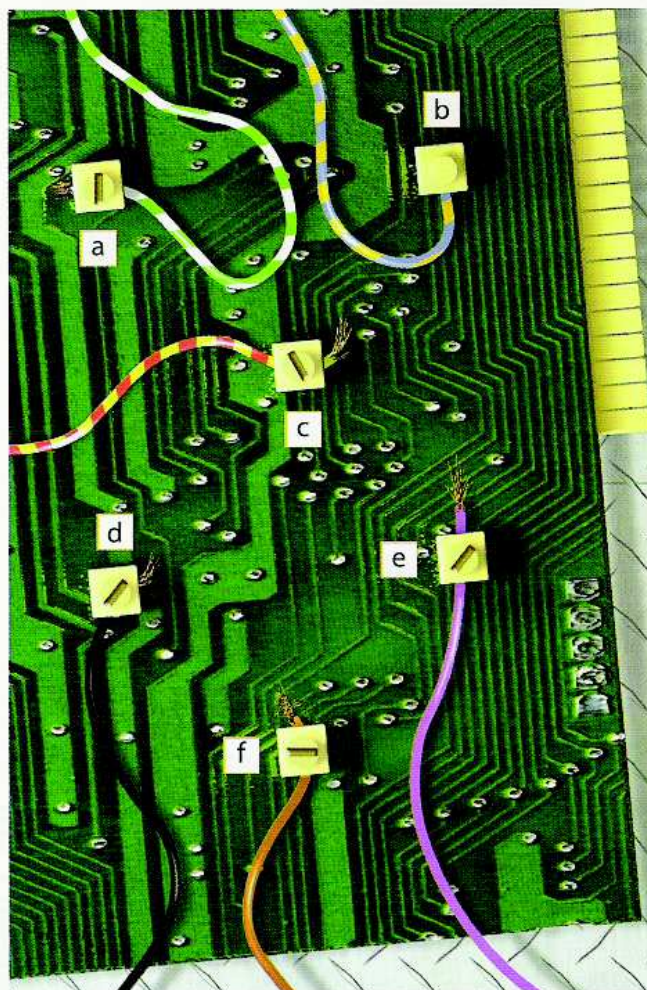
# Colours

- 1 What colours are the wires?
- 2  Some connections are wrong. Which wires are connected to the wrong terminals? Listen and find out.
- 3  Listen again and correct the bad connections. Find the correct terminals on the picture.

## should

We use *should* to say what's right or correct.  
 It *should be connected* to terminal B.  
 (Perhaps it is connected to terminal B, perhaps it isn't, but terminal B is correct.)

- 4 Look at the picture and say what's wrong.  
 Example  
 The black wire should be connected to terminal D.



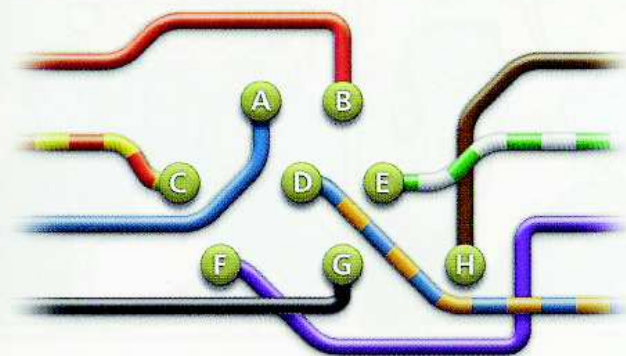
- 5 Work with a partner.  
 A – look at the information below.  
 B – look at the information in file 23 on page 108.

## A

- 1 Tell your partner how these wires should be connected.

## Example

The green and white wire should be connected to terminal E.



- 2 Listen to your partner and connect these wires.



# Identifying people

1 What's your job? Who do you work for?

## Jobs and companies

I'm a technician and he's  
an engineer.

(a or an + job)

We work for BMW.

(for + company)

Write a, an, or for in the spaces.

- 1 She's ..... software engineer.
- 2 Are you ..... electrician?
- 3 She works ..... IBM.
- 4 He's ..... quality technician.
- 5 They work ..... the Exxon Mobil Corporation.
- 6 I'm ..... architect.

3 Listen again and write the missing words.

4 Work with a partner. Take turns to ask and answer these questions.

A Does the security guard know Pablo?

B No, he doesn't.

A Is Pablo a service engineer?

B Yes, he is.

1 Does the security guard know Pablo?

2 Is Pablo a service engineer?

3 Does Pablo work for Allied Engineering?

4 Does Pablo have a security pass?

5 Is the door open?

6 Does Pablo open the door?

7 Is the woman Pablo's customer?

8 Does she know the man with the cart?

9 Is the man a thief?

2 Listen and read the comic strip. What's the story about?



5 Work with a partner. Take turns to be Pablo and read the story.

6 Here are two rules for making questions. When do we use rule 1 and when do we use rule 2? Write 1 or 2 in the correct space.

### Making questions

1 Use *Do* or *Does*.

You work here. → Do you work here?

He works here. → Does he work here?

2 Change words around.

You're an engineer. → Are you an engineer?

He's a thief. → Is he a thief?

Use rule ..... with the verb *be*.

Use rule ..... with other verbs.

7 Choose the correct word to make these questions.

1 Are / Do you a security guard?

2 Is / Does your company have security guards?

3 Are / Do there security cameras at your company?

4 Are / Do visitors need security passes?

5 Are / Do you need a security pass?

6 Is / Do security a problem for your company?

7 Is / Does your company have security checks?

8 Work in groups. Discuss security in your companies. Ask and answer the questions in 7. Can you do more to stop thieves?

